


AQUA-Selekt 5.1.02-150101

Program installation



A Farsighted View of the Sewer

AQUA-Selekt / AQUA-WertMin

AQUA-Selekt 75% savings on CCTV Cost

*with max. 20% CCTV inspection sample
with a respectable precision of 95% for*

*condition inspection and leakage identification
to reduce exfiltration & infiltration*


for public sewers and house connections.

Expert office for sewer rehabilitation

Auf der Leh 17
D-66271 Kleinblittersdorf
Fon/Fax: +49-6805-6992108-0/-9
Mobil: +49-170-188 40 74
E-Mail: kj@aging-model.com
Web: www.sewer-rehabilitation.com

Local offices:
Cäcilienstraße 58
D-47839 Krefeld
Sophienstraße 104
D-76135 Karlsruhe
kj@forecast-model.com
www.sewer-software.com

Dipl.-Ing. Karl Jansen



Program for the condition inspection and leakage identification of sewer systems with
max. 20% CCTV inspection sample with a respectable precision of 95%.

Developed and field-tested in **bmb+f** - research project "Development of a Generally Applicable Procedure for the Selective Initial Inspection of Sewers and House Connections" of the Federal Ministry of Education and Research from Germany

© Dipl.-Ing. Karl Jansen

CONTENTS

1.	Program installation	3
1.1	Software and hardware requirements	3
1.1.1	Operating system requirements	3
1.1.2	Conversion of Project.mdb from v4.x to v5.x not required	3
1.1.3	Minimum requirements	4
1.1.4	Ideal configuration	4
1.1.5	System time	4
1.1.6	Starting the program	4
1.1.7	Program file	5
1.1.8	Content of the „*.pg and *.ini files“:	5
1.1.9	Project file	5
1.1.10	Open project automatically	6
1.1.11	Open project manually	6
1.1.12	Printing device driver	6
1.1.13	No multiple server support	6
1.2	Installation instructions	7
1.2.1	Setup routine	7
1.2.2	Main program	8
1.2.2.1	Demo project database for AQUA-Selekt 5.0	9
1.2.2.2	A-SL 5_0 Import for A-WM.accdb	9
1.3	Install AQUA-Selekt setup	9
1.4	AQUA-Selekt Setup uninstall	11
1.5	Matrix-Dongle	12
1.5.1	General Licensing	12
1.5.2	Programme internal error message at only one dongle for the two programmes	13
1.5.3	Programme internal error message if there is no upgrade to Access 2010	13

1. Program installation

1.1 Software and hardware requirements

1.1.1 Operating system requirements

The operating system required is: Microsoft Windows Win 7 (only 32-bit). Installation of **MS-Access 2010** or **MS-Access-Runtime 2010** is mandatory. This Runtime is shareware from microsoft! You can download the Runtime in the download area from [AQUA-Selekt 5.x](#).

Please note the following link

<http://office.microsoft.com/en-us/access-help/introduction-to-access-2010-security-HA010341741.aspx>

or enclosed PDF file „**Introduction to the safety of Access 2010.pdf**“ in folder „**Manual, info etc.**“.

The free SmartTool Security Manager for Access 2010, 2007 and 2003 is an easy and straightforward alternative. Unfortunately it is only available in German. FREE: Adjust security settings for all Access installations and automatically add trusted storage locations

(<http://www.add-in-world.com/katalog/acc-secmgr/>).

That's it. You can now install [AQUA-Selekt 5.x](#) and work with it as normal.

Note: From version 5.0.00-130601 a remote update of the dongles for MS Access 2010 is required!



1.1.2 Conversion of Project.mdb from v4.x to v5.x not required

Conversion of old project databases from Access 2003 to Access 2010 is not required, as these are supported by Access 2010.

You can import, edit and export MDB databases and ACCDB databases from the v5.1.01.140101.

1.1.3 Minimum requirements

The minimum equipment recommended is:

- Processor with a minimum of 2 GHz.
- Minimum of 2 GB RAM
- SVGA-graphics board and SVGA-monitor with a resolution of 1024*768 pixel.
- Available hard disk space min. 10 GB if MS-Access 2010 is already installed or Runtime.
- Mouse.
- Printer.

1.1.4 Ideal configuration

The ideal configuration is:

- Two Processor with a minimum of 2 GHz.or more.
- RAM 4 GB.
- SVGA-graphics board and SVGA-monitor with a resolution of 1024*768 pixel.
- Available hard disk space 50 GB (depends on project size) and MS-Access 2010 installed 2010 or Runtime.
- Mouse.
- Printer.

1.1.5 System time

The software falls back on the system time.

1.1.6 Starting the program

The program is started by the Windows START menu "**Start\Programs\AQUA-Selekt 5.x EN**".

1.1.7 Program file

The **AQUA-Selekt 5.x** program is stored in the Microsoft-Access database „**AquaSelekt.accde**“. This program file is opened when starting the program. It is located in the installation directory of **AQUA-Selekt 5.x**.

There are some additional data files in the installation directory necessary for running the program. These data files (*.pg, *.ini) should be saved regularly with the ending * sic.

1.1.8 Content of the „*.pg and *.ini files“:

AquaSelekt_Backend.pg:	Contains all required tables for new project data bases.
options.pg:	Includes the import settings.
languages.pg:	Contains the language table „Strings“ for German/English in the program.
AquaSelekt.ini:	Contains all informations for the program start and the language: [Sprache] sprache=englisch or sprache=deutsch [Backend] dbname=C:\Program files\AQUA-Selekt 5.0 EN\Demo5_0.accdb [Projekte] Projekt1= C:\Program files\AQUA-Selekt 5.0 EN\Demo5_0.accdb

1.1.9 Project file

The network data of your actual project are stored in an additional database, e.g. "**Demo5_0.accdb**" in the following called project file. Please create a separate directory for your project files, and save them continuously.

For a better overview, the installation includes a completely evaluated sample file "**Demo5_0.accdb**" that is delivered according to the **substance value method**. This "**Demo5_0.accdb**" contains a completely evaluated selective initial inspection with an available inspection for a 394.2 km long sewer network (389.9 km mixed water sewers, 3.4 km rain water sewers and 0.9 km waste water sewers) with a total of 8,532 reaches for a southern German city. Of the 8,532 reaches or 394.2 km, condition classes according to the substance value were available with **AQUA-WertMin 7.x** as a requirement for prediction-supported rehabilitation strategies for 2,172 reaches or 101.7 km.

Furthermore, with the installation, the “**A-SL 5_0 Import for A-WM.accdb**” is installed as a model for the export of **AQUA-WertMin 7.x**. This file is available in **format MS-Access 2010** and mandatory in this format for the import to **AQUA-WertMin 7.x**.

1.1.10 Open project automatically

When starting the program automatically your recently edited project file will be opened and lined out in the program header, e.g.: **[C:\Program files\AQUA-Selekt 5.0 EN\File name.accdb]**.

Furthermore, the last 9 project files are displayed in the menu under “File”.

1.1.11 Open project manually

With the menu item “**File\Open Project Database**” another project file that is to be edited can be selected. With the “File” menu, the last nine files that have been modified can be opened directly. In the default setting the last project will be opened automatically.

You can set up a new project with “**File\Create New Project Database**”.

1.1.12 Printing device driver

Graphs and printing lists only can be viewed in the case of an installed printing device, which is configured as the MS Windows standard printer.

1.1.13 No multiple server support

It is not possible to run the program under network configuration. So: Installation only on work station!

1.2 Installation instructions

1.2.1 Setup routine

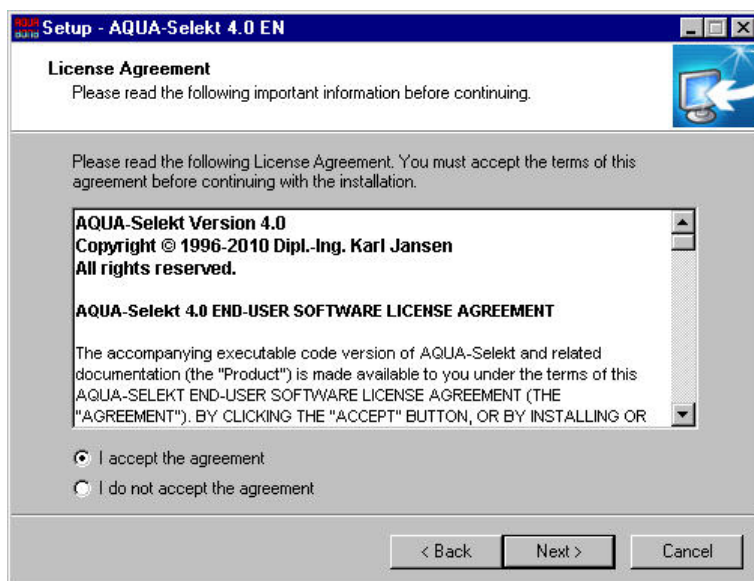
Installation of the full version is performed with the file "[ASelekt_full_5.x.yz-Date_Setup_english.exe](#)".

Important: Before installation, all old versions, i.e. 3.0b, 4.0b, and 4.0 must be uninstalled!

After double clicking "[Setup_english.exe](#)", the installation wizard will open:

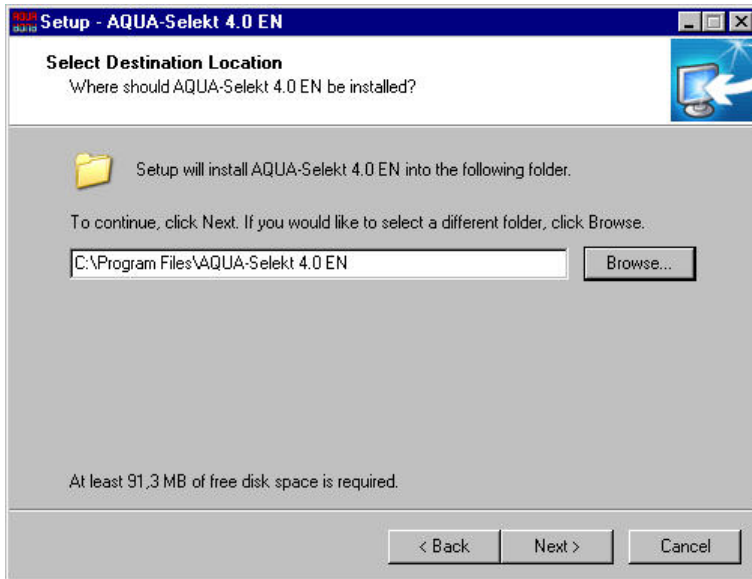


Click on **Next>**

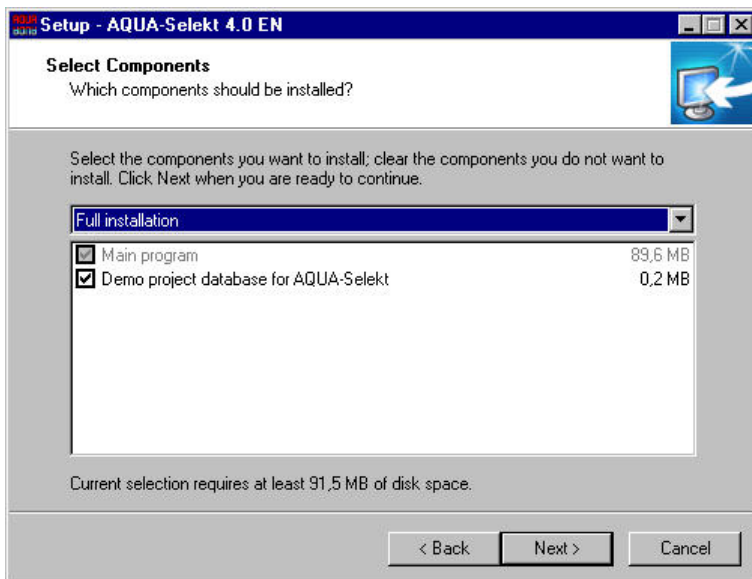


Please read and accept the license agreement prior to the installation!

Click on **Next>**



You may now select an installation folder on your hard drive for **AQUA-Selekt 5.x**. We recommend using the default path. Click on **Next>**.



You may now select the program components for installation. By default, all components will be installed, i.e:

1.2.2 Main program

The main program to be installed includes all required files to operate the program. **This component must be installed!**

1.2.2.1 Demo project database for AQUA-Selekt 5.0

This file includes a completely evaluated demo project. "Demo5_0.accdb" may be opened and edited with **AQUA-Selekt 5.0**. In connection with "A-SL Import.accdb" and the program manual, the results achieved in the new "Project.accdb" can be recalculated and compared with the results in "Demo5_0.accdb".

1.2.2.2 A-SL 5_0 Import for A-WM.accdb

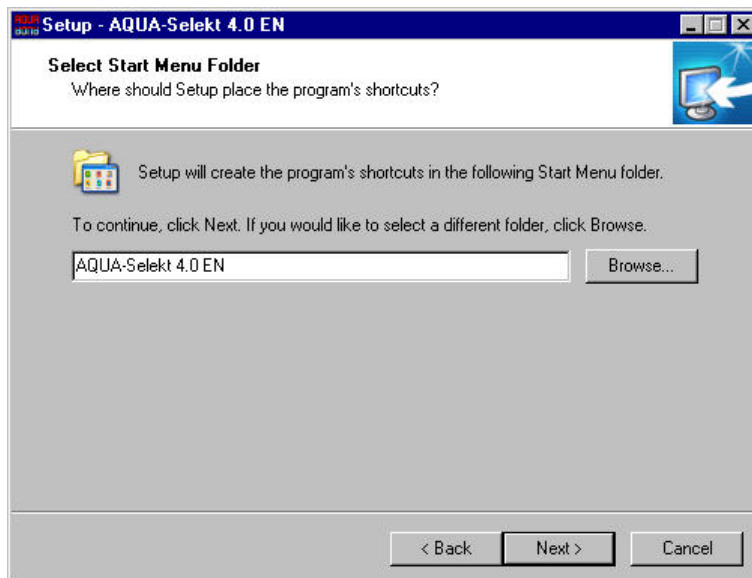
"A-SL 5_0 Import for A-WM.accdb" includes the required import data for **AQUA-WertMin 7.x**.

Note: This file is available in format MS-Access 2003 and mandatory in this format for the import to AQUA-WertMin 7.x.



1.3 Install AQUA-Selekt setup

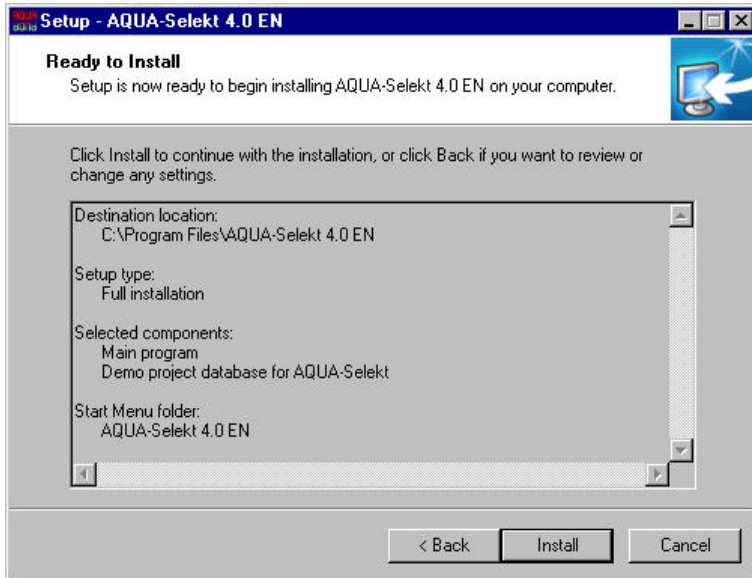
Select all required components and click <Continue>.



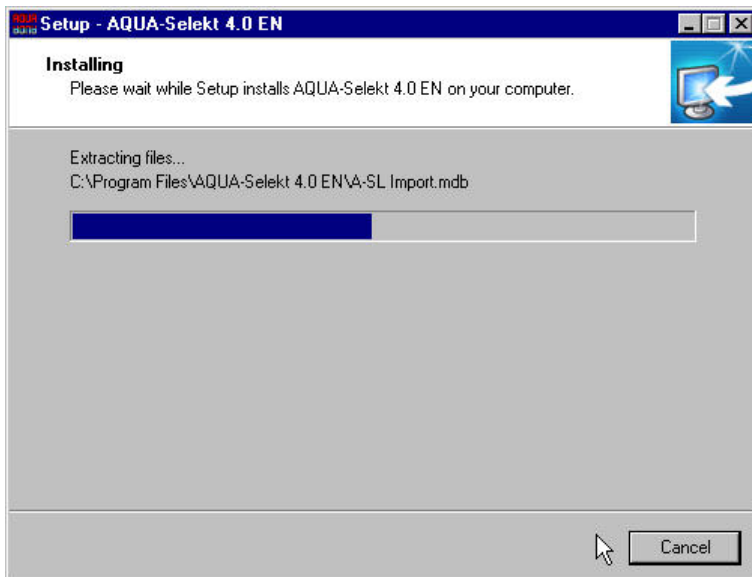
Select the program group that should be added to the Start menu. We recommend using the default path.

Click on **Next>**

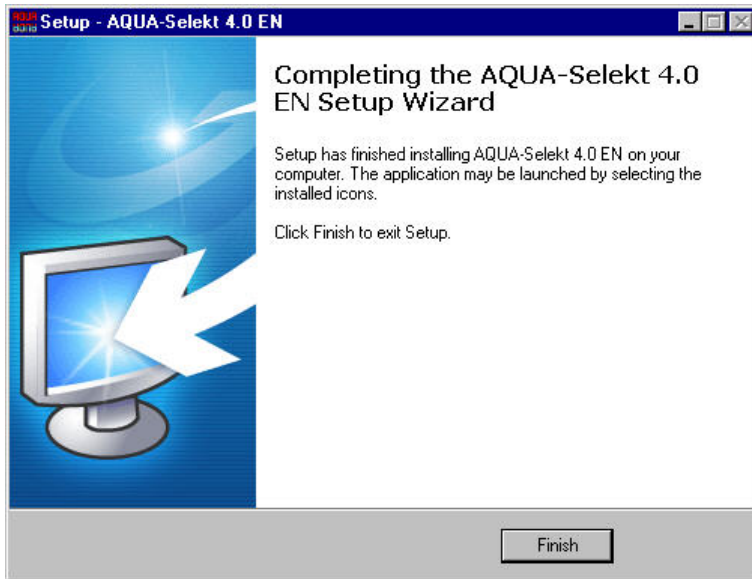
You can now see an overview of the selected installation parameters. You may change your selection at any time; therefore click on **<Back>**.



Click **<Install>** to start the installation.



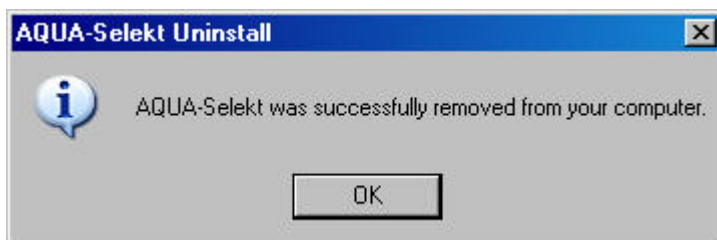
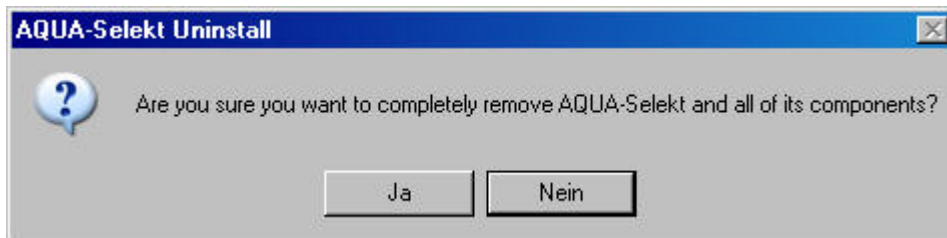
During installation, the installation bar shows the progress of the installation.
The installation may be **cancelled** at any time.



After successful installation, a new program group will be added to the Start menu and various desktop links. Click **Finish** to complete the installation process.

1.4 AQUA-Selekt Setup uninstall

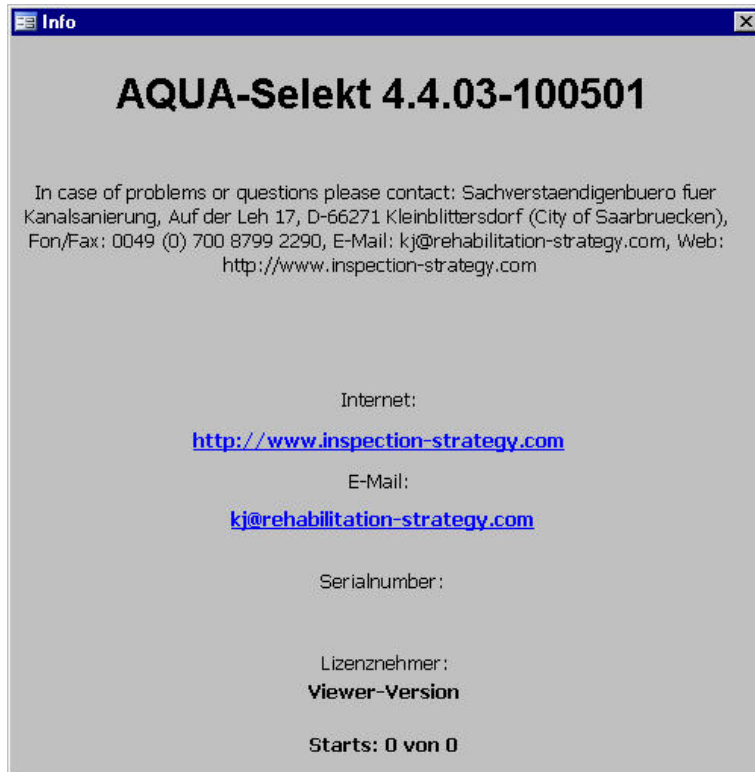
Double click on "unins000.exe" to start the uninstaller.



1.5 Matrix-Dongle

1.5.1 General Licensing

For a smooth program operation of the demo, leasing or full version an internet connection and dongle are required.



Without the dongle the user works with a „**Viewer version**“ without editing, calculation, import, and export functions. The title of the print list and help/info is „**Viewer version**“.

The different versions can be activated by email as remote update chargeable or free of charge (see remarks in the order and price list, incl. general terms and conditions and delivery and payment conditions).

1.5.2 Programme internal error message at only one dongle for the two programmes

The following error messages may occur:

1. **Dongel Error1!** = dongle prepared for **AQUA-WertMin 7.x** instead of **AQUA-Selekt 5.x**.

Remedy: Double-click on the authoritative remote file **A-SL_MxModUpd_1234567890.exe**

2. **Dongel Error2!** = dongle prepared for **AQUA-Selekt 5.x** instead of **AQUA-WertMin 7.x**.

Remedy: Double-click on the authoritative remote file **A-WM_MxModUpd_1234567890.exe**

1.5.3 Programme internal error message if there is no upgrade to Access 2010

3. **Dongel Error3!** = Wrong dongle. Upgrade to Access 2010 required.

Remedy: Request upgrade to Access 2010.

Kleinblittersdorf (City of Saarbruecken)/Krefeld, 1th January 2015

Your sewer consultant

Expert office for
sewer rehabilitation ●
●

Dipl.-Ing. Karl Jansen

Auf der Leh 17
D-66271 Kleinblittersdorf
Fon/Fax: +49-6805-6992108-0/-9
Mobil: +49-170-188 40 74

E-Mail: kj@aging-model.com
Web: www.sewer-rehabilitation.com

Local offices:
Cäcilienstraße 58
D-47839 Krefeld
Sophienstraße 104
D-76135 Karlsruhe

kj@forecast-model.com
www.sewer-software.com