



AQUA-WertMin 7.3.01-150101


Installation instructions



A Farsighted View of the Sewer AQUA-Selekt / AQUA-WertMin

AQUA-Wertmin made it possible

 *the ageing and condition forecast*
and


 *cost-optimised individual*
rehabilitation strategies

for sewer networks to **DWA-M 143:2005-11.**

Expert office for sewer rehabilitation

Auf der Leh 17 D-66271 Kleinblittersdorf Fon/Fax: +49-6805-6992108-0/-9 Mobil: +49-170-188 40 74	Local offices: Cäcilienstraße 58 D-47839 Krefeld Sophienstraße 104 D-76135 Karlsruhe
---	--

Dipl.-Ing. Karl Jansen E-Mail: kj@aging-model.com kj@forecast-model.com
Web: www.sewer-rehabilitation.com www.sewer-software.com



Program for the ageing and condition forecast with cost-optimised individual rehabilitation strategies for sewer networks to **DWA-M 143-14:2005-11.**

approved since the beginning of 2001 for the amended self control regulation in the German federal state Baden-Württemberg

© Dipl.-Ing. Karl Jansen

CONTENTS

1.	Program installation	3
1.1	Software and hardware requirements	3
1.1.1	Operating system requirements	3
1.1.2	Conversion of Project.mdb from v6.x to v7.x not required	3
1.1.3	Minimum equipment	4
1.1.4	Ideal configuration	4
1.1.5	System time	4
1.1.6	Starting the program	4
1.1.7	Program file	5
1.1.8	Content of the „*.wf files“:	5
1.1.9	Project file	5
1.1.10	Open project automatically	5
1.1.11	Open project manually	6
1.1.12	Printing device driver	6
1.1.13	No multiple server support	6
1.1.14	System currency	6
1.1.15	Currency conversion	7
1.2	Installation instructions	8
1.2.1	Setup routine	8
1.2.2	Main program	9
1.2.2.1	Demo project data base for AQUA-WertMin	10
1.2.2.2	Exercise file “External KDB.accdb”	10
1.3	Install AQUA-WertMin setup	10
1.4	AQUA-WertMin Setup uninstall	12
1.5	Matrix-Dongle	13
1.5.1	General Licensing	13
1.5.2	Programme internal error message at only one dongle for the two programmes	14
1.5.3	Programme internal error message if there is no upgrade to Access 2010	14

1. Program installation

1.1 Software and hardware requirements

1.1.1 Operating system requirements

The operating system required is: Microsoft Windows Win 7 (only 32-bit). Installation of **MS-Access 2010** or **MS-Access-Runtime 2010** is mandatory. This Runtime is shareware from microsoft! You can download the Runtime in the download area from [AQUA-WertMin 7.x](#).

Please note the following link

<http://office.microsoft.com/en-us/access-help/introduction-to-access-2010-security-HA010341741.aspx>

or enclosed PDF file „**Introduction to the safety of Access 2010.pdf**“ in folder „**Manual, info etc.**“.

The free SmartTool Security Manager for Access 2010, 2007 and 2003 is an easy and straightforward alternative. Unfortunately it is only available in German. FREE: Adjust security settings for all Access installations and automatically add trusted storage locations

(<http://www.add-in-world.com/katalog/acc-secmgr/>).

That's it. You can now install [AQUA-WertMin 7.x](#) and work with it as normal.

Note: From version 7.0.00-130601 a remote update of the dongles for MS Access 2010 is required!



1.1.2 Conversion of Project.mdb from v6.x to v7.x not required

Conversion of old project databases from Access 2003 to Access 2010 is not required, as these are supported by Access 2010.

You can import, edit and export MDB databases and ACCDB databases from the v7.2.02-140101.

1.1.3 Minimum equipment

The minimum equipment recommended is:

- Processor with a minimum of 2 GHz
- Minimum of 2 GB RAM
- SVGA-graphics board and SVGA-monitor with a resolution of 1024*768 pixel
- Available hard disk space min. 10 GB if MS-Access 2010 is already installed
- Mouse
- Printer

1.1.4 Ideal configuration

The ideal configuration is:

- Processor with a minimum of 2 GHz.
- RAM 4 GB
- SVGA-graphics board and SVGA-monitor with a resolution of 1024*768 pixel
- Available hard disk space 50 GB (depends on project size) and MS-Access 2010 installed or Runtime.
- Mouse
- Printer

1.1.5 System time

The software falls back on the system time.

1.1.6 Starting the program

The program is started by the Windows START menu "**Start\Programs\AQUA-WertMin 7.0 EN**".

1.1.7 Program file

The **AQUA-WertMin 7.x** program is stored in the Microsoft-Access database "**WertMin.accde**". This program file is opened when starting the program. It is located in the installation directory of **AQUA-WertMin 7.x**.

There are some additional data files in the installation directory necessary for running the program. These data files (*.wf, *.ini) should be saved regularly with the ending * sic.

1.1.8 Content of the „*.wf files“:

- report.wf:** Contains table „multilingual“ for German/English in the printing lists.
- new.wf:** Contains all required tables for new project data bases.
- languages.wf:** Contains the language table „Strings“ for German/English in the program.
- sys.wf:** Contains all transfer settings.

1.1.9 Project file

The network data of your actual project are stored in an additional database, e.g. "**Name.accdb**" in the following called project file. Please create a separate directory for your project files, and save them continuously.

Note: For project files was maintained under Access 2010 the "File format.accdb"! All project files included "Name.accdb" are of Access 2010!



For a better overview the installation package includes the sample file "**Projekt_Demo7.accdb**".

In addition the exercise file "**External KDB exercise file.accdb**" is also included. This file was created from **Projekt_Demo7.accdb** and includes various mistakes and some other field names. Please import this file with the standard import and try to do all calculation processes.

1.1.10 Open project automatically

When starting the program automatically your recently edited project file will be opened and lined out in the program header, e.g.: [**C:\Program Files\AQUA-WertMin 7.0 EN\ File name.accdb**].

Furthermore, the last 9 project files are displayed in the menu under "File".

1.1.11 Open project manually

With using the "File\open" menu another project file can be selected for editing. The last four project files edited can be selected directly from the "File" menu.

In the default setting automatically the latest project file edited is opened.

This can be changed by unsetting "**open=1**" and changing it into "**open=0**" in your **Wertmin7.ini** file. **No project** will be opened then if you start the program.

1.1.12 Printing device driver

Graphs and printing lists only can be viewed in the case of an installed printing device, which is configured as the MS Windows standard printer.

You have to install the printing device driver even in the case of no printer. We recommend a "HP-Laserjet-driver"; which must be connected with "FILE:".

These settings are prerequisite for running **AQUA-WertMin 7.x** properly!

1.1.13 No multiple server support

It is not possible to run the program under network configuration. So: Installation only on work station!

1.1.14 System currency

Within the software, printing lists and the graphs, the system currency of the MS Windows country settings is used.

1.1.15 Currency conversion

Since version 5.09 of 17 December 2001 the currency was adapted to Euro.

For existing projects all cost data can be converted into Euros from the individual currency (menu Extras / EURO - conversion). The user enters the conversion rate for the respective country. The standard value indicated is the conversion from German marks (DM) into Euros. For every project the conversion can only be done once and the system displays a message if the conversion was already performed before.

For new projects the preset standards with the standard price lists for the rehabilitation cost calculation and repair costs in the planning instructions are already available in Euros (€). A conversion is no longer possible, particularly if the project data are imported in DM. A Euro conversion is not possible.

Be careful with the import of old data with DM values. These costs must be converted to Euro (€) in the sewer data base before you import them.

Conclusion: Only Euro values should be imported into new projects. Old projects are automatically converted upon opening. Afterwards everything should be converted to Euro values (menu "Extras / Euro conversion").

Another conversion is not possible.

Note: Additional data can only be imported into a converted Euro file with Euro values!



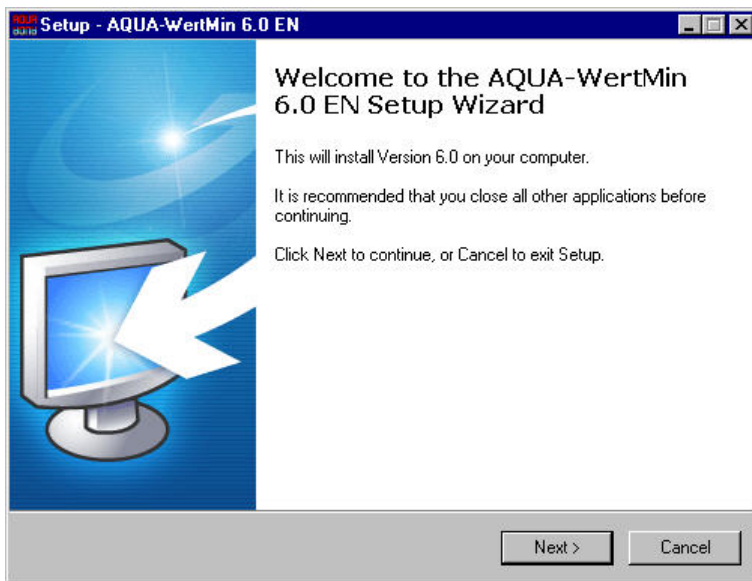
1.2 Installation instructions

1.2.1 Setup routine

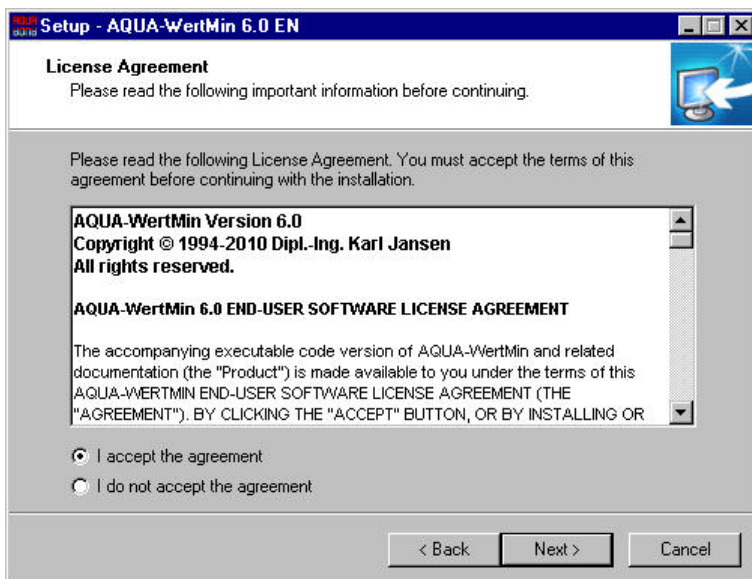
The full version is installed with the “[AWertMin_full_7.x.yz-Date_Setup_english.exe](#)” file.

Important: Before the installation all older versions must be deinstalled.

With a double click on the file “[Setup_english.exe](#)” the installation assistant opens:

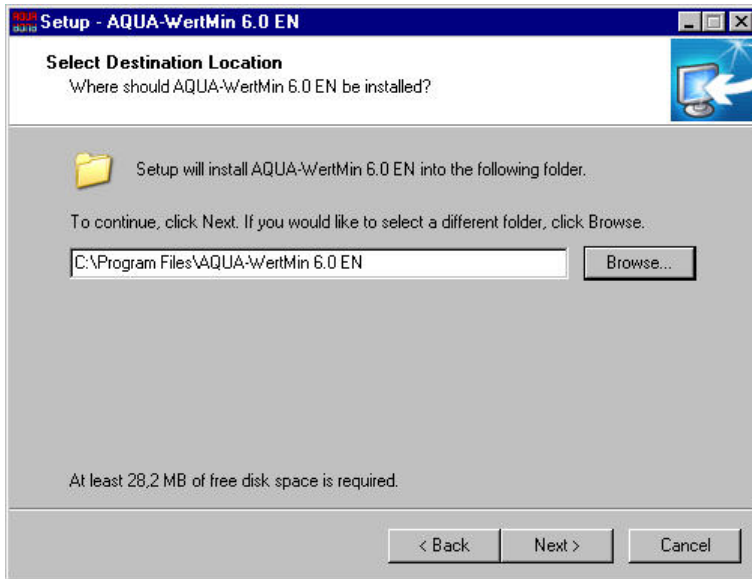


Click on **Next>**

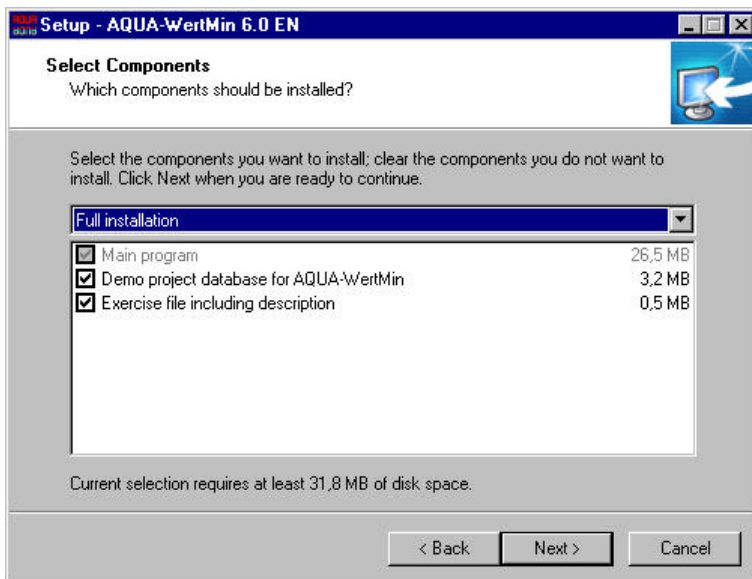


Please read and accept the licence agreement before you install the program.

Click on **Next>**



You can now chose the installation folder on your hard disk for AQUA-WertMin 7.x. However, we recommend to accept the standard settings. Click on **Next>**



You can now choose the program components for the installation. The default installation includes all components. The program contains the following components:

1.2.2 Main program

The main program to be installed contains all application data required for the program execution. **These components cannot be deselected!**

1.2.2.1 Demo project data base for AQUA-WertMin

This demo project “Projekt_Demo7.accdb” can be opened and edited with AQUA-WertMin 7.x.

Note: You can import, edit and export MDB databases and ACCDB databases from the v7.2.02.140101.



1.2.2.2 Exercise file “External KDB.accdb”

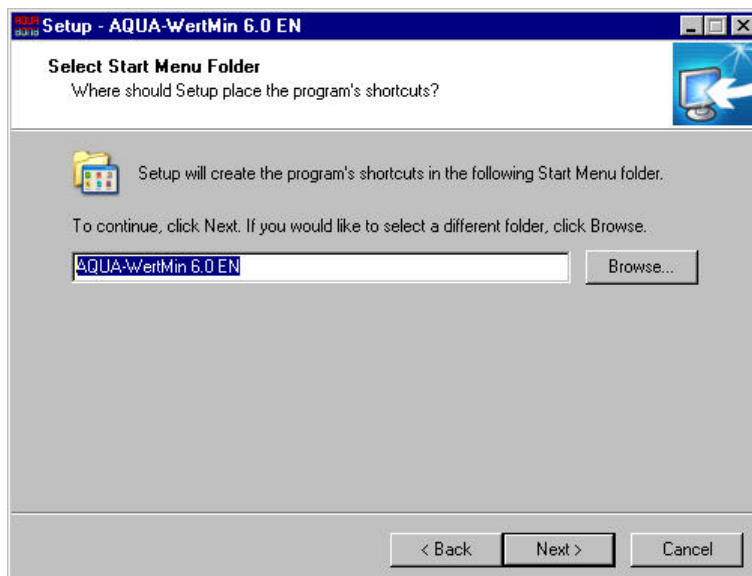
Only for training purposes in AQUA-WertMin 7.x. Please import this training file. This is **Projekt_Demo7.accdb** with various integrated errors. Import and fix errors. After that, you understand the basics of the program.

Import is performed by means of the attached sample import with the internal import transformation " **External KDB.accdb importing**“ (“**Externe KDB.accdb importieren**”) for the external MS Access 2010 database "**External KDB.mdb**" with two source tables, i.e. "**base_table**" („**Basistabelle**“) and "**street**" („**Strasse**“).

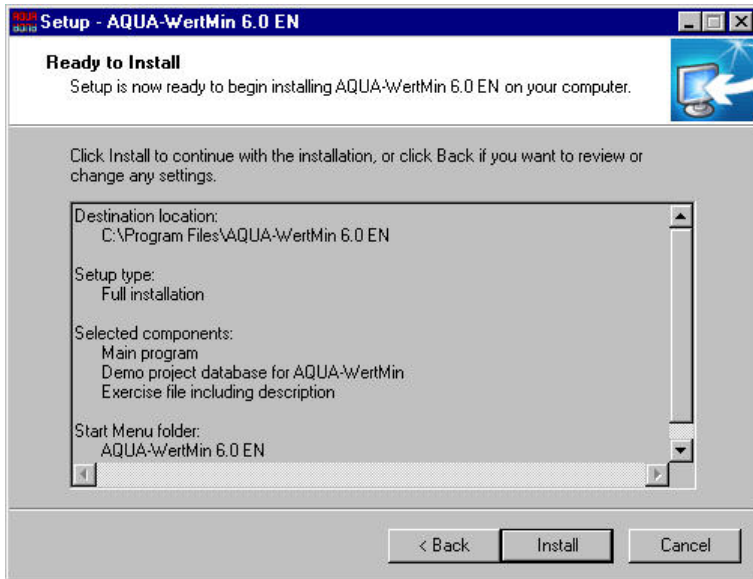
You can copy this import and adapt it to the MS Access 2010 tables to be imported.

1.3 Install AQUA-WertMin setup

Select all required components and click **Next>**.

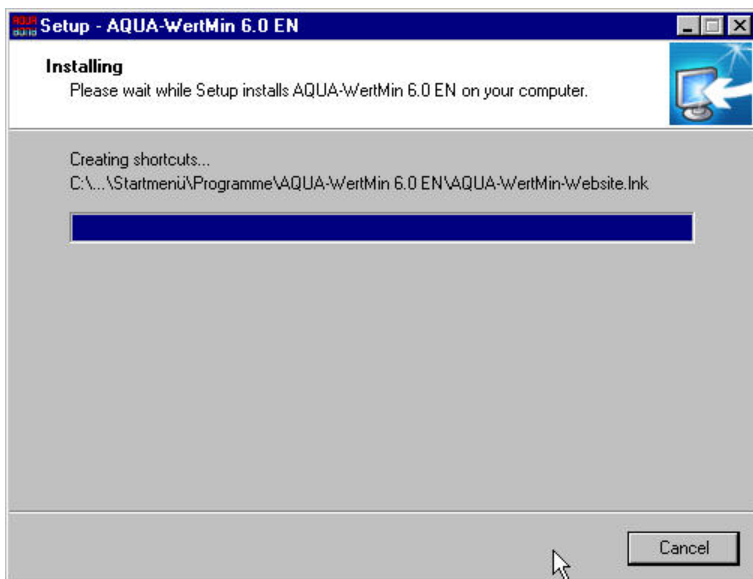


In this window you can choose the program group for the start menu. We recommend to accept the standard settings. Click on **Next>**



Finally the system displays an overview of all selected installation parameters. You can change your settings by clicking on **<Back**.

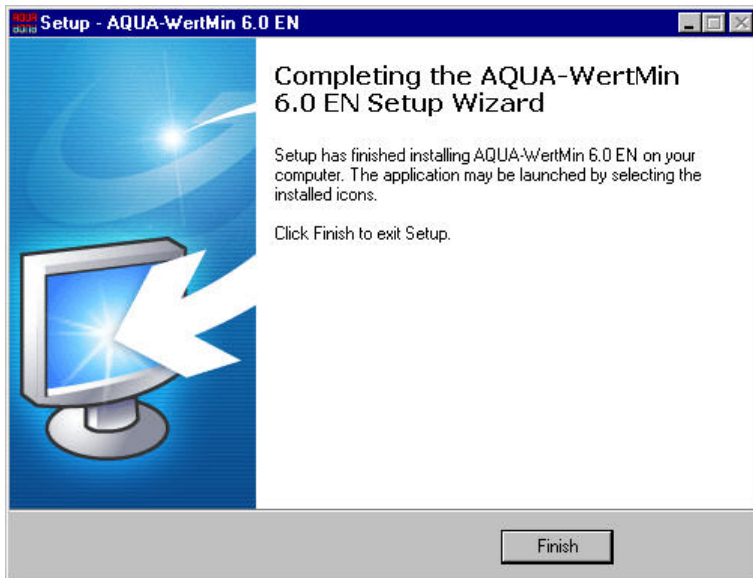
Click on **<Install>** to start the installation.



During installation you can observe the installation progress by means of the status bar.

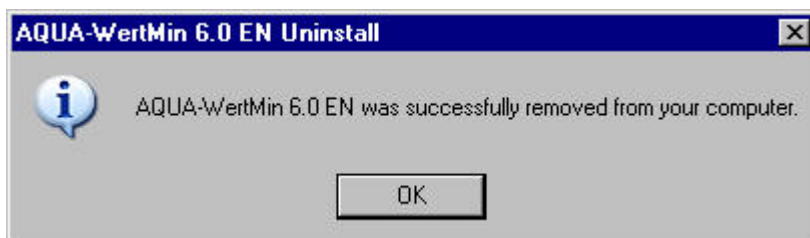
The installation may be **cancelled** at any time.

After successful installation, a new program group will be added to the Start menu and various desktop links. Click **Finish** to complete the installation process.



1.4 AQUA-WertMin Setup uninstall

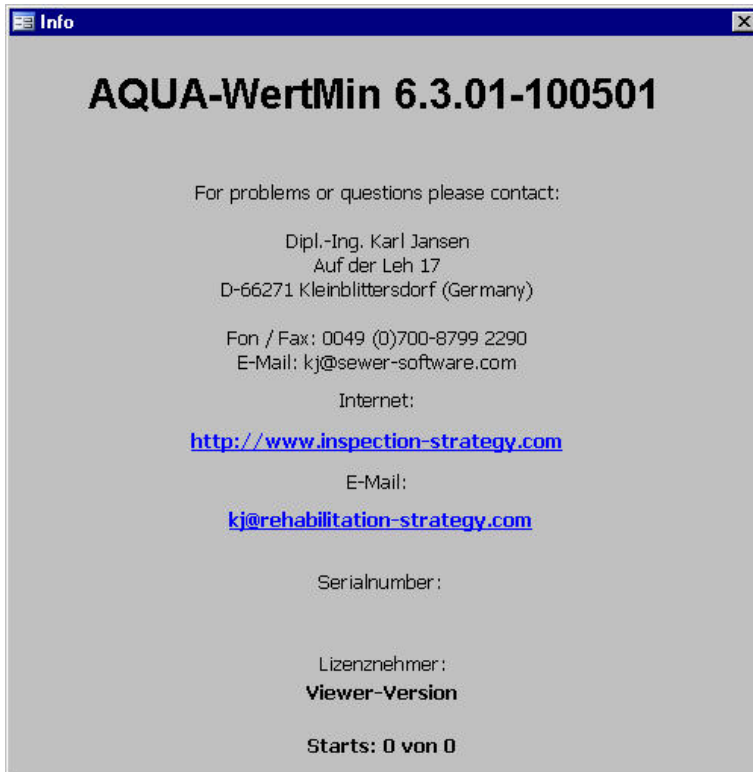
Double click on "**unins000.exe**" to start the uninstaller.



1.5 Matrix-Dongle

1.5.1 General Licensing

For a smooth program operation of the demo, leasing or full version an internet connection and dongle are required.



Without the dongle the user works with a viewer version without editing, calculation, import, and export functions. The title of the print list and help/info is „**Viewer version**“.

The different versions can be activated by email as remote update chargeable or free of charge (see remarks in the order and price list, incl. general terms and conditions and delivery and payment conditions).

1.5.2 Programme internal error message at only one dongle for the two programmes

The following error messages may occur:

1. **Dongel Error1!** = dongle prepared for **AQUA-WertMin 7.x** instead of **AQUA-Selekt 5.x**.

Remedy: Double-click on the authoritative remote file **A-SL_MxModUpd_1234567890.exe**

2. **Dongel Error2!** = dongle prepared for **AQUA-Selekt 5.x** instead of **AQUA-WertMin 7.x**.

Remedy: Double-click on the authoritative remote file **A-WM_MxModUpd_1234567890.exe**

1.5.3 Programme internal error message if there is no upgrade to Access 2010

3. **Dongel Error3!** = Wrong dongle. Upgrade to Access 2010 required.

Remedy: Request upgrade to Access 2010.

Kleinblittersdorf (City of Saarbruecken)/Krefeld, 1th January 2015

Your sewer consultant

Expert office for
sewer rehabilitation ●
●

Dipl.-Ing. Karl Jansen

Auf der Leh 17
D-66271 Kleinblittersdorf
Fon/Fax: +49-6805-6992108-0/-9
Mobil: +49-170-188 40 74

E-Mail: kj@aging-model.com
Web: www.sewer-rehabilitation.com

Local offices:
Cäcilienstraße 58
D-47839 Krefeld
Sophienstraße 104
D-76135 Karlsruhe

kj@forecast-model.com
www.sewer-software.com